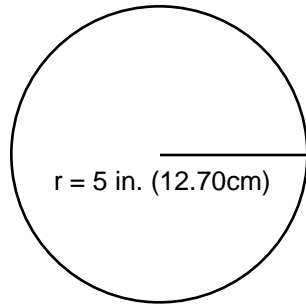


TECH NOTE

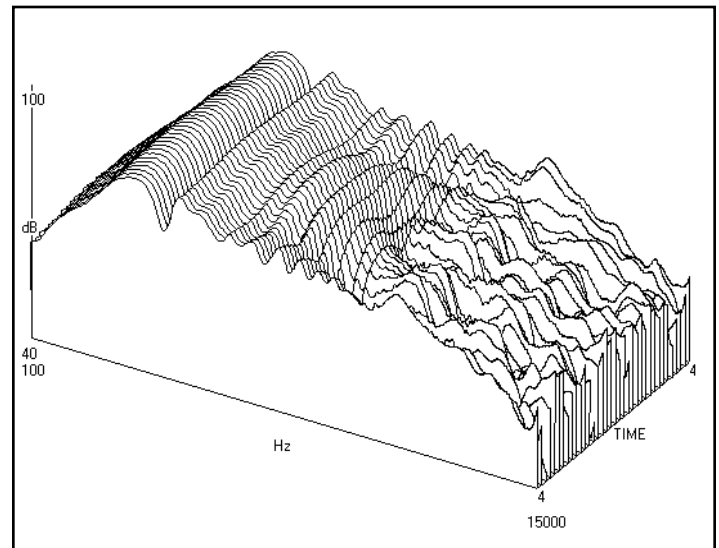
LARES

LARES DODECAHEDRON TECHNICAL SPECIFICATIONS

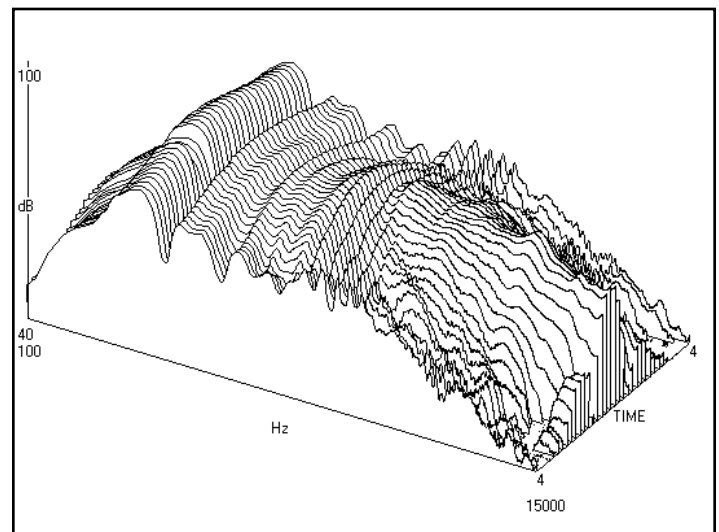


Measurements displayed below were made using TEF in a semi-anechoic space with the LARES Dodecahedron mounted on a mechanical turntable.

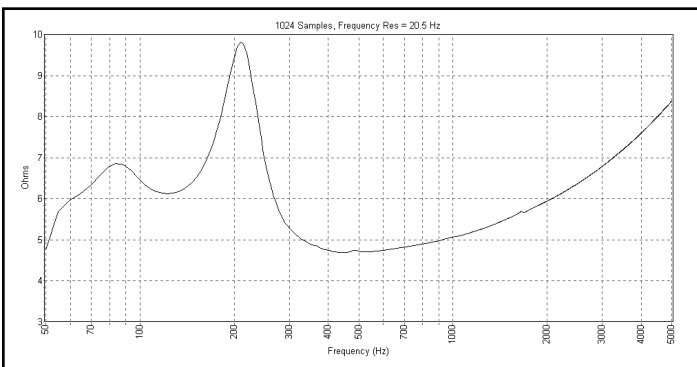
Product:	LARES Dodecahedron
System Type	12-Sided Measurement
Enclosure:	1/8" Steel
Dimensions	31.4" (79.79 cm) Circumference
Weight	13.0 lbs. 5.896 kg.
Components	Qty. 12 - 3 in (76.20 mm)
Impedance	6 ohms Nominal
Sensitivity	96dB SPL 2.83V @1 meter
Mounting	Stainless Steel - 5/8" 27 thread
Finish	Black automotive grade paint
Termination	14-4 SJ Black= (-) White= (+)



All Loudspeakers Active - Each curve equals 10deg. rotation



Single Loudspeaker Active - Each curve equals 10deg. rotation



All Speakers Active - Impedance

Technical Note # 005

LARES Associates
www.lares-lexicon.com

30 Dunbarton Road Belmont, MA 02478 • PHONE 617-484-9266 • FAX: 617-484-8620
9170 Rt. 108 Suite 404 Columbia MD 21045 • PHONE 410-964-3262 • FAX: 410-964-1173